

Typhoon Race 2010 – Hong Kong

Arrangement on Model Inspection

1. Model specification

Refer to FAI Sporting Code Section 4 Volume F3 (2010 edition) 5.8 “Class F3F Radio Control Slope Soaring”.

5.8.2. Characteristics of Radio Controlled Slope Gliders

Maximum surface area (St) 150 dm²

Maximum flying mass 5 kg

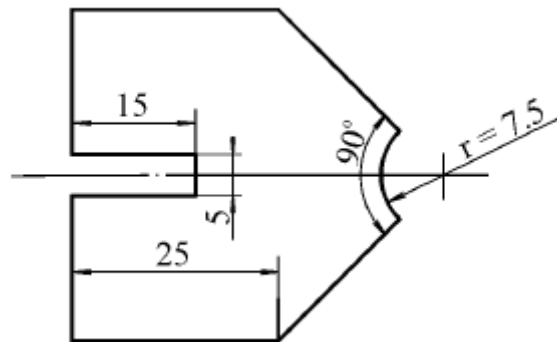
Loading on St between 12 and 75 g/dm²

Minimum radius of fuselage nose 7.5 mm in all orientations (see F3B nose definition for measuring technique).

The radio shall be able to operate simultaneously with other equipment at the normally used spacing in the allocated R/C bands (i.e. 35 MHz : 10 kHz).

The competitor may use three models in the contest. The competitor may combine the parts of the models between the rounds provided the resulting model used for flight conforms to the rules and that the parts have been checked before the start of the contest. Addition of ballast (which must be located internally in the model) and/or change of angles of setting are allowed. Variation of geometry or area is allowed only if it is actuated at distance by radio control.

5.3.1.3. Characteristics of Radio Controlled Gliders F3B



TEMPLATE FOR NOSE RADIUS, TOW HOOK AND MARKING

2. Model checking

Models that are known to be comply with FAI F3F requirement can be exempt from full checking. The organizer will do a type check for all the models available before the competition. Competitors are requested to prepare their models for a brief visual inspection during competition registration. Models checked and approved for competition will be officially labelled on every detachable parts. Using unofficially checked parts in competition may lead to disqualification.

The following models have been type checked or known to be F3F legal. They can be exempt from full checking:

- Acacia
- Alliaj
- Alliaj HM
- Aris
- Ascot
- Ceres and its variants
- Cyril
- Demo
- Dingo

ESO Pro
Extreme F3F
FreeStyler III
Miraj F3F
NYX
Precious
Predator
RaceM
RaceM-X
Scud-X
Sting
Strega
Supra
Tanga
Vento
Viking
Vikos

The following are designs that are out of the organizer's knowledge. Competitors using these models will be requested for a full checking:

Aiolus and its variants
Artist
Artist II
Longbow
Graphiter
Sparrow

New or Original designs
Type approved models but with significant modifications

The following models are currently known to be out of FAI F3F specification. Competitors using these models are required to make the corresponding corrections.

Skorpion - Nose radius is smaller than 7.5mm.

– End –